

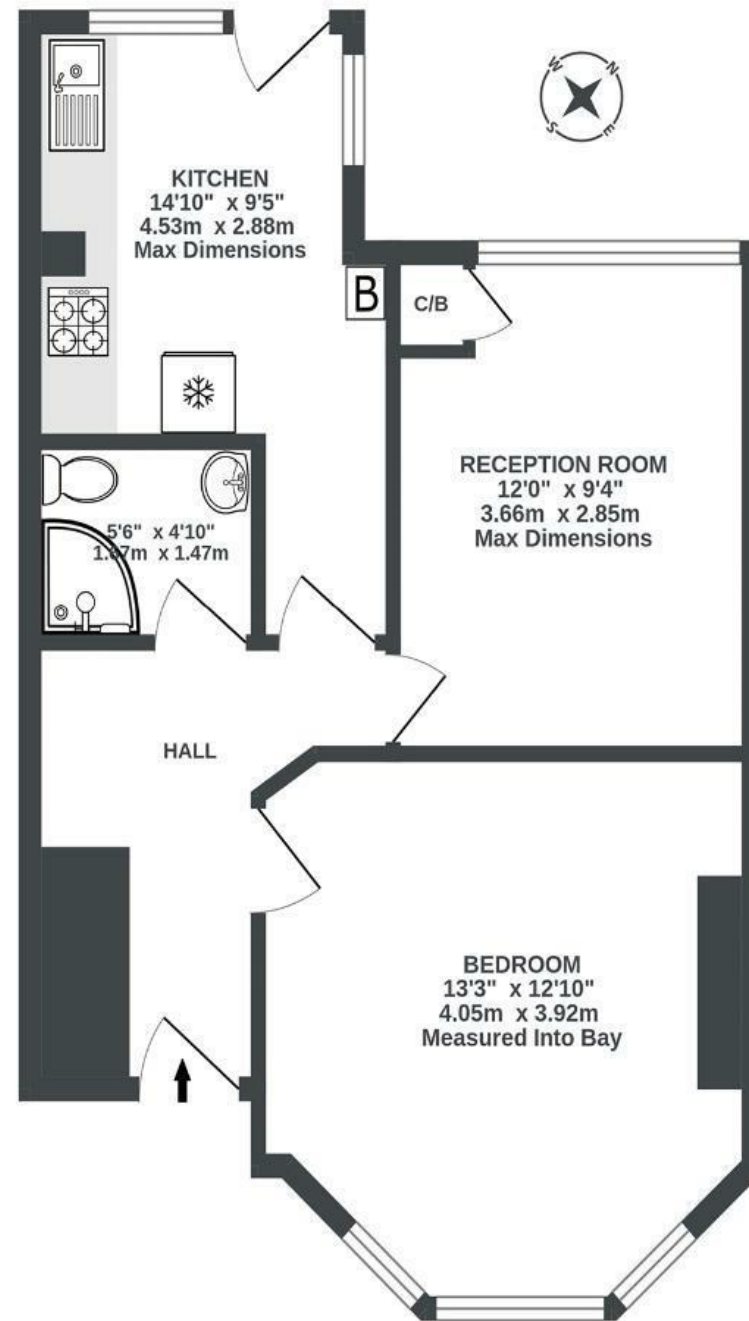
Bloomfield Road

BRISLINGTON

APPROXIMATE FLOOR AREA
42.3 SQM / 456 SQFT



GROUND FLOOR
456 sq.ft. (42.3 sq.m.) approx.



Illustrations are for reference purposes only, measurements are approximate, not to scale.

Boardwalk

Bloomfield Road

, BRISLINGTON



£240,000



BS4 3QA



1 Bedrooms



1 Bathrooms

"I've loved living so close to Arnos Vale - walking through the woodland and park has become a favourite part of my day. Bloomfield Road has been a perfect location for me as a cyclist as I can hop straight onto the riverside path for an easy ride into town. Being on the cul-de-sac end of Bloomfield means the road is surprisingly quiet and I have everything I need within walking distance. I fell in love with the flat because of how light it is, with the bay windows in the front which get the morning sun and the huge windows at the back. I love looking out onto the garden while I'm drawing or doing yoga. The garden has a really peaceful feel as it's so private and I've spent lots of summer afternoons reading a book in the sun. There's also the benefit of a separate kitchen, which was rare amongst the other flats I looked at and has been a lovely, bright space for cooking and sharing meals."

